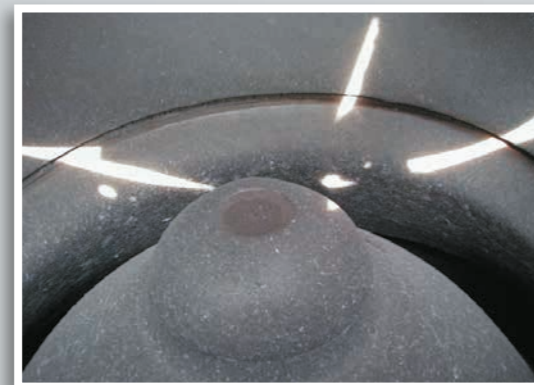


AHM 800 R – for sections in which grade 2 mixture is installed

The AHM 800-R is used on sections in which grade 2 mixture is installed. It is able to remove the ballast with the ballast excavating chain, crush it on the machine, mix it with new material and re-install it as a formation layer/frost layer. Installation of the new ballast is carried out in a separate operation.



Ballast crushing system



Ballast excavating chain



Mixer for recycled ballast and additives

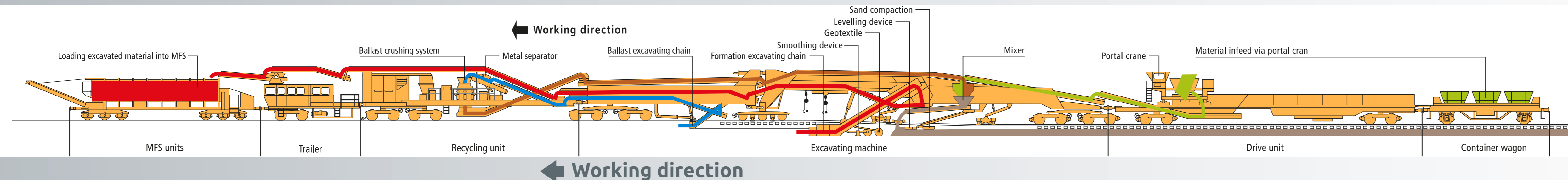


Material infeed via portal crane

Performance ø – 12 hours	300 m
Max. performance per hour	60 m
Ballast Ecavation Chain – Capacity	300 cbm/h
Excavation width	4.000 - 4.600 mm
Subgrade Ecavation Chain – Capacity	500 cbm/h
Excavation width	4.030 - 6.000 mm
Excavation depth max.	1.390 mm
Installation height, gravel/sand up to	500 mm
Installation height, track formation layer	300 mm
Material supply (container wagon backwards)	12 or 24 cbm
Evacuation (to the front)	MFS 100

Schematic drawing of AHM 800 R

Spoil
Excavated ballast
Recycled ballast
Mixed FPL material
Additional material



eurailpool GmbH
Lise-Meitner-Straße 9
D-85737 Ismaning
Tel. +49 (0) 89 90 93 97-20
Fax +49 (0) 89 90 93 97-266
info@eurailpool.com

Austrian branch office
Kl. Neusiedler Str. 29
A-2401 Fischamend
Tel. +43 (0) 2230 92 73
Fax +43 (0) 2230 92 79 061

New ways out of old tracks
www.eurailpool.com